

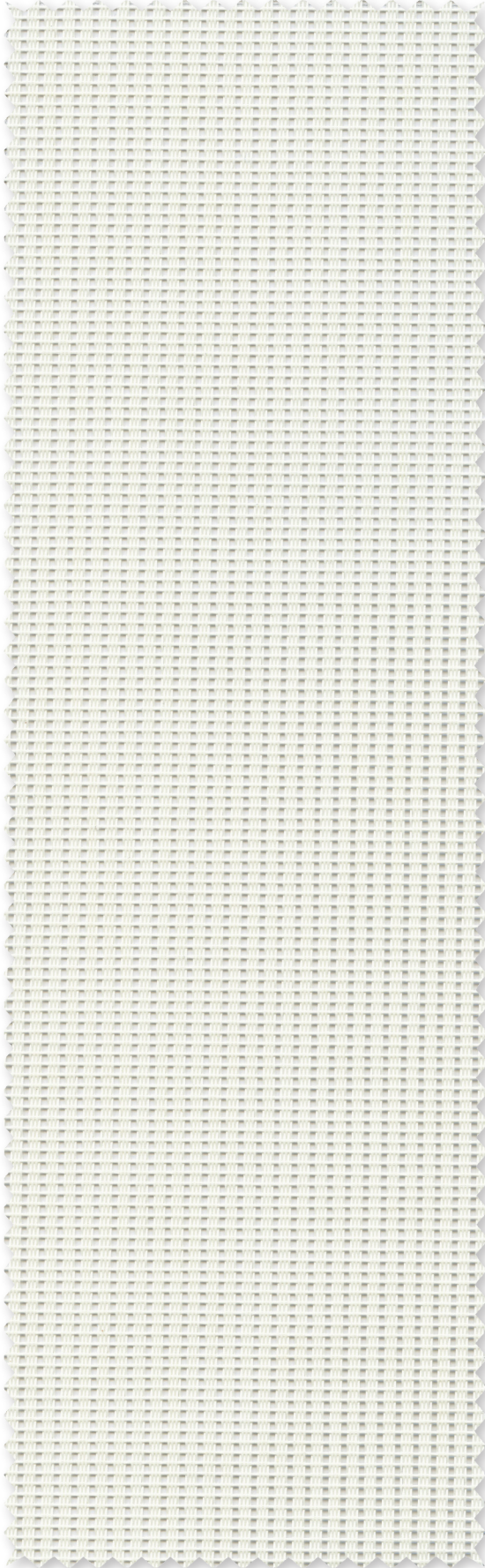


STYLE
1000

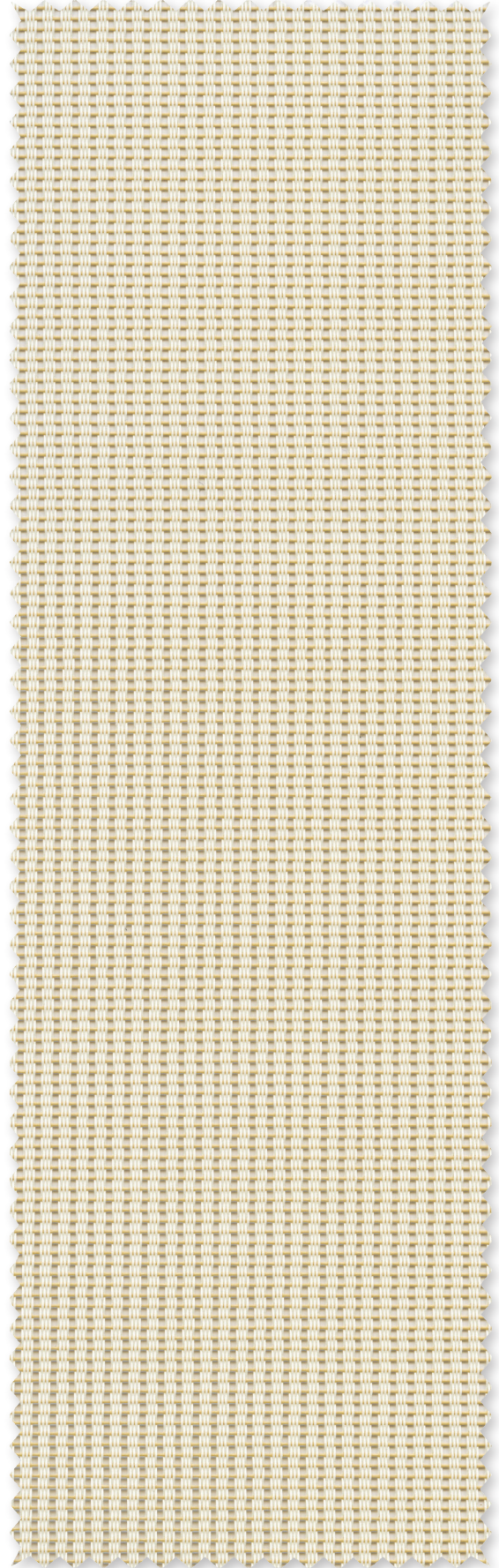
WEAVING
EXCELLENCE
WITH
INNOVATION



P02 **White**



P03 **Antique White**



*Colors may vary based on individual computer settings and should only be used for general reference.

| Code | Color | SOLAR OPTICAL PROPERTIES | | | | SHGC/G VALUE g-tot (glass & blind) | |
|-------------------------|---------------|--------------------------|----|----|----|---------------------------------------|--------|
| | | TS | RS | AS | TV | SINGLE | |
| | | | | | | 1/4 CL | 1/4 HA |
| STYLE 1000 - 25% | | | | | | | |
| P02 | White | 36 | 50 | 14 | 31 | 0.42 | 0.35 |
| P03 | Antique White | 37 | 47 | 16 | 32 | 0.44 | 0.36 |



Microban® antimicrobial protection inhibits the growth of stain-causing bacteria, mold and mildew on the shade.



PRODUCT CERTIFIED FOR
LOW CHEMICAL EMISSIONS
UL.COM/GG
UL 2818



TS = Solar Transmittance
RS = Solar Reflectance
AS = Solar Absorption
TV = Visual Transmittance

SHGC = Solar Heat Gain Coefficient

1/4 CL = 1/4" Clear Glass
1/4 HA = 1/4" Heat Absorbing Glass

Fabrics Installed Internally
Zero-Degree Profile Angle

For additional performance values, test references and technical definitions visit us at www.phifer.com.

STYLE 1000 SPECIFICATIONS

This vinyl coated fiberglass ribbed-weave fabric offers substantial shading and excellent outward visibility with improved daytime privacy. Style 1000 can also be used in exterior shading systems.

| | | | | |
|---------------------------------------|---|---|----------------|-------------|
| FIRE CLASSIFICATION | California U.S. Title 19 (small scale) NFPA 101 (Class A Rating) BS 5867 2008 Part 2 Type B Performance ASTM E 84 (Class 1) | NFPA 701-2004 TM#1 (small scale) IBC Section 903.1 (Class A Rating) NFPA 701 TM#2 (large scale) | | |
| BACTERIA AND FUNGAL RESISTANCE | ASTM E 2180 GREENGUARD Mold and Bacteria Standard includes Microban antimicrobial additives | ASTM G21 ASTM 6329 | AATCC30 Part 3 | ASTM D 3273 |
| ENVIRONMENTAL CERTIFICATION | GREENGUARD Certified to these standards for low chemical emissions into indoor air during product usage | GREENGUARD Gold | | |
| LEAD FREE | RoHS/Directive 2002/95/EC ANSI/WCMA A 100.1-2007 for lead content US Consumer Product Safety Commission Section 101 | REACH (EC 1907/2006) compliant | | |
| WARRANTY | 10-year interior | 5-year exterior | | |
| TRACKLESS | TrackLess Technology minimizes the fiberglass yarns' inherent tendencies to track when being rolled up in a shade. With TrackLess Technology these same fabrics now track less, roll up straighter and reduce shade fabrication time. | | | |

STYLE 1000

| | |
|-------------------------|--|
| WIDTHS | 36", 48", 72", 84" and 96" 91.4 cm, 121.9 cm, 182.9 cm, 213.4 cm and 243.8 cm |
| ROLL LENGTH | 30 Linear Yards 27.4 m |
| COMPOSITION | 35% Fiberglass 65% Vinyl on Fiberglass |
| MESH WEIGHT | 8.8 oz/yd ² 298 g/m ² |
| FABRIC THICKNESS | 0.020 in 0.51 mm |
| OPENNESS FACTOR | Approximately 25% |
| UV BLOCKAGE | Approximately 75% |

PHIFER
INCORPORATED

P. O. Box 1700 • Tuscaloosa, Alabama 35403-1700 USA
Phone: 205.345.2120 • FAX: 205.391.0799
Toll Free USA/Canada: 1.800.221.5497
www.phifer.com • ISO Registered



© SheerWeave is a registered trademark of PHIFER INCORPORATED.
© MICROBAN is a registered trademark of Microban Products Company.
™ UL, the UL logos and the UL mark are trademarks of UL LLC.
Photo courtesy of UNIFLEX WINDOW FASHIONS, Sao Paulo, Brazil.
© PHIFER INCORPORATED V15B 3033830